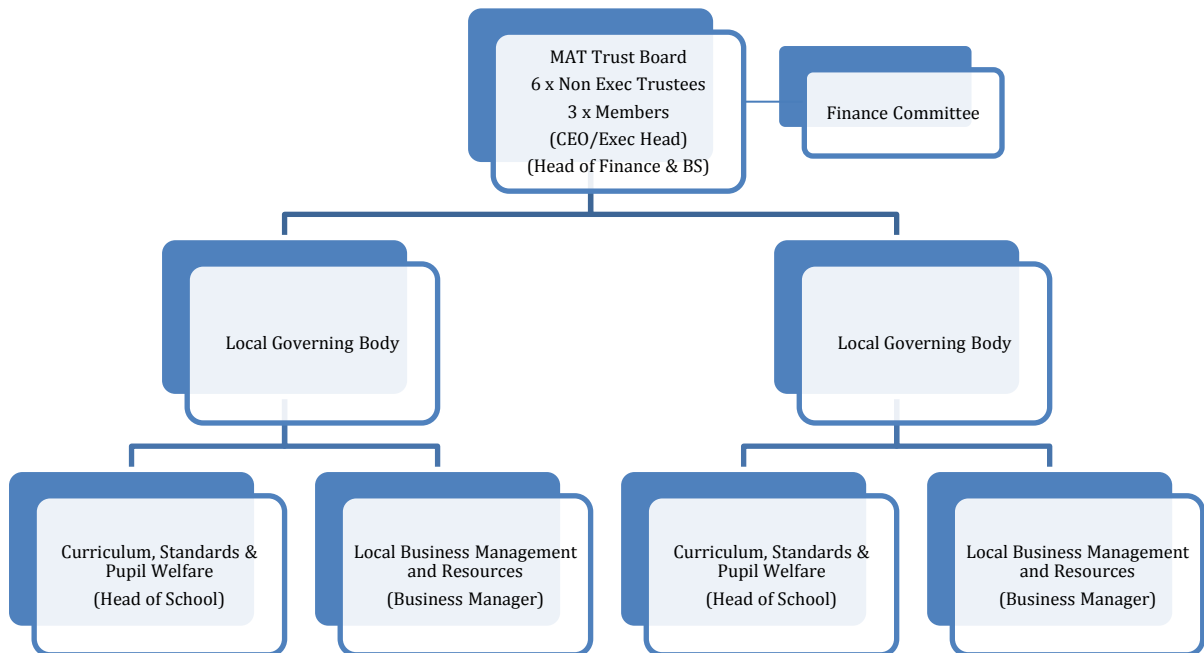




TRUSTEE GOVERNANCE STRUCTURE



CHANGE Schools Partnership Board/Non-Executives

- Bruce Hanley** - Chair
- Vice Chair** - VACANT [Trustee resigned 7/15]
- Allan John** - Chair of Local Governing Body
- Robin Whitworth** - Chair of Local Governing Body
- Sarah Garner** - Chair of Finance/HR
- Beth Gask** - Trustee -
- Mike Baker** - Member
- Alison Fiala** – Member
- Philip Heady** - Member
- Amanda Towns** - Secretary to the Board
- Stuart Ellis** - CEO/Executive Headteacher (Ex Officio)
- Cris Edwards** - Head of Finance & Business Services

Governance structure

CHANGE Schools Partnership has a CEO who also acts as Executive Headteacher over the two schools, which are led and managed day to day by Heads of School.

Responsibility for governance is held by the Trust Board with delegated responsibilities given to executive officers and local governing bodies via a detailed Scheme of Delegation.